



Easy Chess Puzzle # 0049

By

G Bud Games
<https://gbud.in>

October 21, 2021

Contents

Easy Chess puzzle # 0049 - Mate in 2 moves	3
Easy chess puzzle 0049	3
Solution to easy chess puzzle 0049	4
Solution 1	4
Right moves for the solution to the easy chess puzzle 0049	6
Explanation for the moves	6
Categories of easy chess puzzle 0049	6
How to view the solution to easy chess puzzle 0049	7
How to get help for moves in the easy chess puzzle 0049	7
Play chess for free	9

List of Figures

1	Solve this easy chess puzzle 0049. Mate in 2 moves @ https://gbud.in/gqc18k1	3
2	Solve this chess puzzle online with solution @ https://gbud.in/gqc18k1	3
3	Initial board position of easy chess puzzle 0049	4
4	Nd2+ - This is the power of knight. Your knight is giving check to the king though there are pieces in between them	5
5	Ka1 - This is the only move available for your opponent	5
6	Nxc2# - Second knight gives a checkmate. The king has no free square to move as b1 is attacked by your other knight. This is called double knight mate	6
7	Click the solution button to view solutions @ https://gbud.in/gqc18k1	7
8	Click the help button to get help on next move @ https://gbud.in/gqc18k1	8
9	Solve more easy puzzles @ https://gbud.in/chsezpz	8
10	Solve other puzzles @ https://gbud.in/chsgppz	8
11	Play chess online for free. Solve puzzles and play with friends	9
12	Solve this puzzle online by scanning this QR code or go to the link below	10

Easy Chess puzzle # 0049 - Mate in 2 moves

Solve this easy chess puzzle and improve your chess games through improvement of your chess strategies and chess tactics.

Puzzle No : 0049

Difficulty level : Easy

Description : Mate in 2 moves

Next Move : Black

Player level : Beginner

Short URL for puzzle : <https://gbud.in/gqc18k1>

Easy chess puzzle 0049

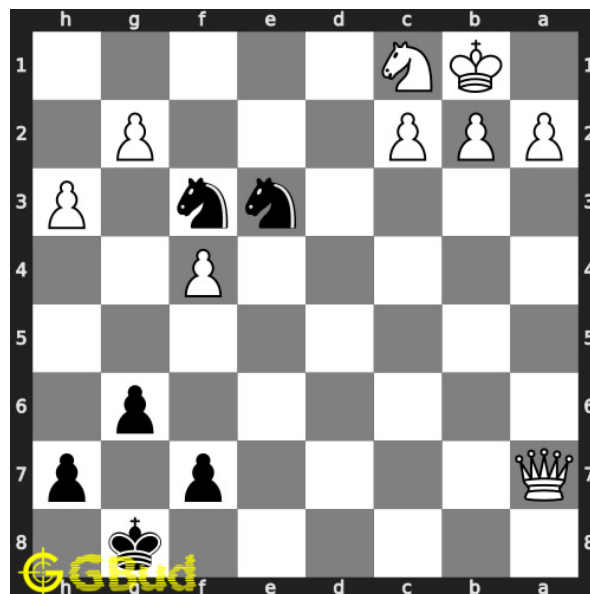


Figure 1: Solve this easy chess puzzle 0049. Mate in 2 moves @ <https://gbud.in/gqc18k1>



Figure 2: Solve this chess puzzle online with solution @ <https://gbud.in/gqc18k1>

Solution to easy chess puzzle 0049

At this puzzle, next **move** is by **Black**. The objective of the puzzle is to mate in 2 moves.

See the interactive solution at the [puzzle page](#)

Solution 1

Initial board position This is the initial board position of easy chess puzzle 0049.

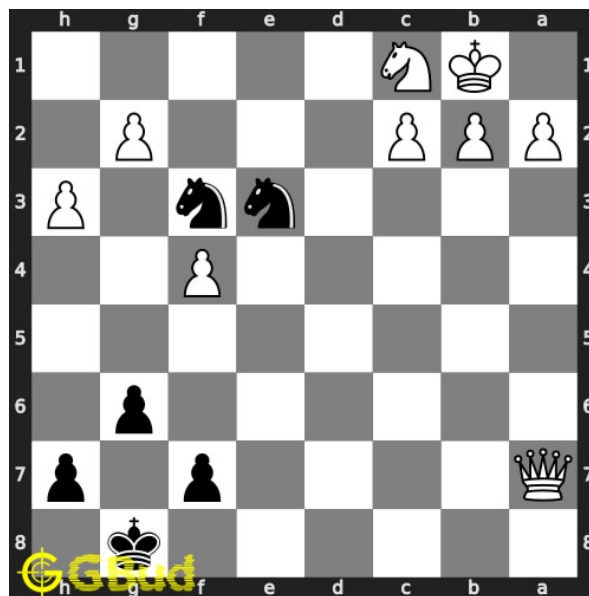


Figure 3: Initial board position of easy chess puzzle 0049

Move 1 Move by black

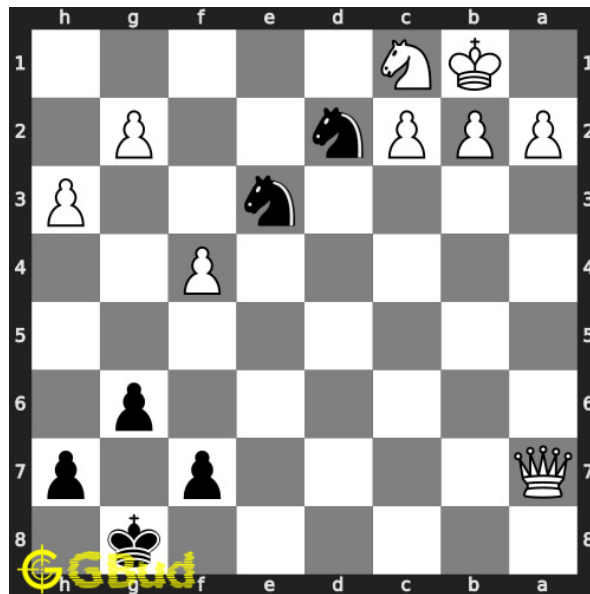


Figure 4: Nd2+ - This is the power of knight. Your knight is giving check to the king though there are pieces in between them

Move 2 Move by white

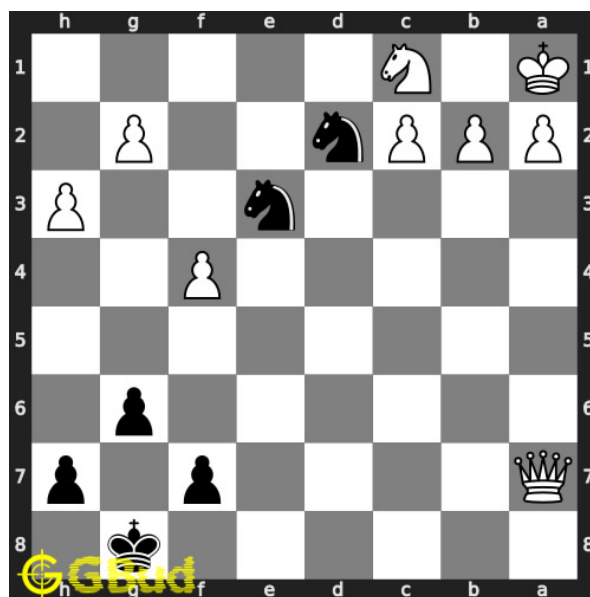


Figure 5: Ka1 - This is the only move available for your opponent

Move 3 Move by black

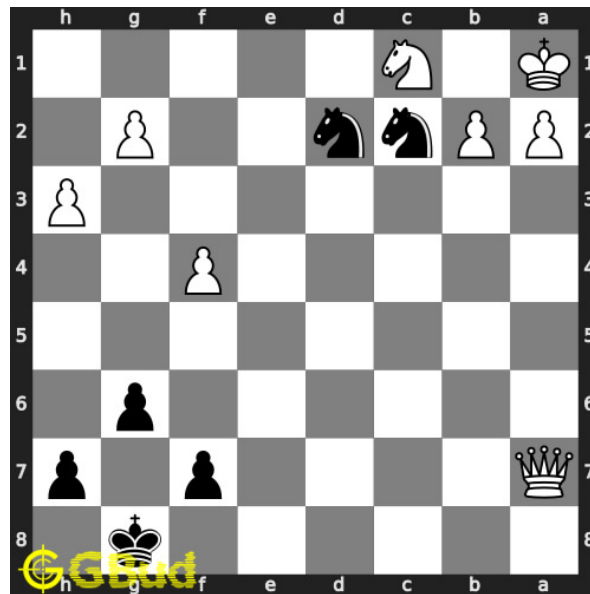


Figure 6: Nxc2# - Second knight gives a checkmate. The king has no free square to move as b1 is attacked by your other knight. This is called double knight mate

Right moves for the solution to the easy chess puzzle 0049

Based on the objective of the puzzle, you have to make the right moves. Following are the right moves

1. Nd2+, Nxc2#

Explanation for the moves

1. Nd2+ - This is the power of knight. Your knight is giving check to the king though there are pieces in between them
2. Nxc2# - Second knight gives a checkmate. The king has no free square to move as b1 is attacked by your other knight. This is called double knight mate
3. Ka1 - This is the only move available for your opponent
4. For right move - You have successfully had a checkmate by using just two knights. Good game.
5. For wrong move - You could have won the game by having the double knight mate

Categories of easy chess puzzle 0049

This easy chess puzzle falls in these categories.

1. [Easy chess puzzles](#)
2. [Mate in 2 puzzles in chess](#)
3. [Endgame puzzles in chess](#)
4. [Strategy puzzles in chess](#)
5. [Mate pattern puzzles in chess](#)

How to view the solution to easy chess puzzle 0049

To view the [solution to this puzzle](#), follow the steps given below

1. Go to the [puzzle page](#)
2. Click the solution button (Key as shown [below](#)) to view the solution



Figure 7: Click the solution button to view solutions @ <https://gbud.in/gqc18k1>

How to get help for moves in the easy chess puzzle 0049

To get help or the possible next moves in the puzzle, , follow the steps given below

1. Go to the [puzzle page](#)

2. Click the help button (exclamation mark as shown [below](#)) to get help or suggestion on next possible [move](#)



Figure 8: Click the help button to get help on next move @ <https://gbud.in/gqc18k1>



Figure 9: Solve more easy puzzles @ <https://gbud.in/chsezpz>



Figure 10: Solve other puzzles @ <https://gbud.in/chsgppz>

Play chess for free

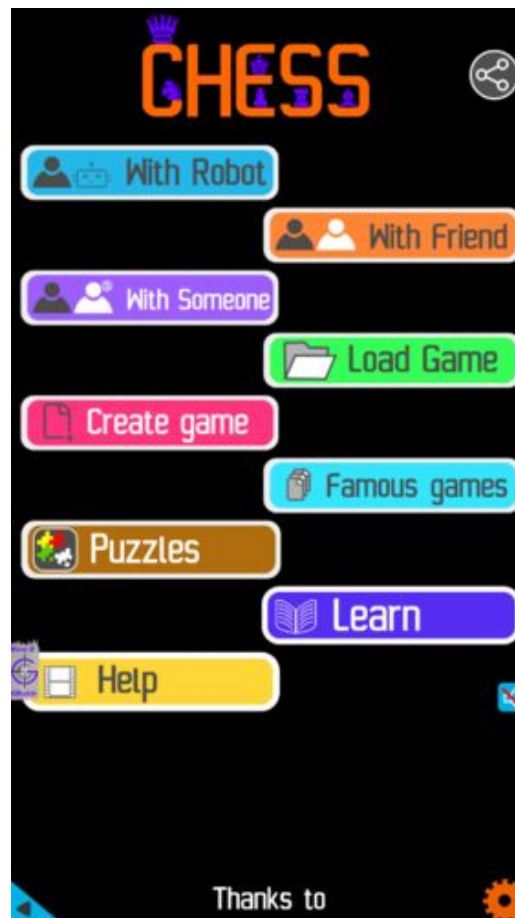


Figure 11: Play chess online for free. Solve puzzles and play with friends

Play chess for free at <https://gbud.in/chs>

We present you a platform to play chess online with friends for free. No need to install any app. You can play chess for free without registration or login.

Simple. You can do several chess related activities.

1. [solve chess puzzles](#)
2. [learn about chess](#)
3. [play chess with computer](#)
4. [play chess with friend](#)
5. [create your own chess games](#)
6. [fen viewer](#)
7. [fen editor](#)
8. [fen generator](#)
9. [pgn viewer](#)
10. [chess board editor](#)

11. [view famous chess games.](#)



Figure 12: Solve this puzzle online by scanning this QR code or go to the link below

<https://gbud.in/gqc18k1>

Read the latest article on Easy Chess puzzle # 0049 - Mate in 2 moves by scanning this QR code or click the link

Previous article : « [Easy Chess puzzle # 0048 - Mate in 1 move](#)

Next article : [Easy chess puzzles](#) »

[Back to top](#)

[Contact Us](#)

© GBud Games 2021